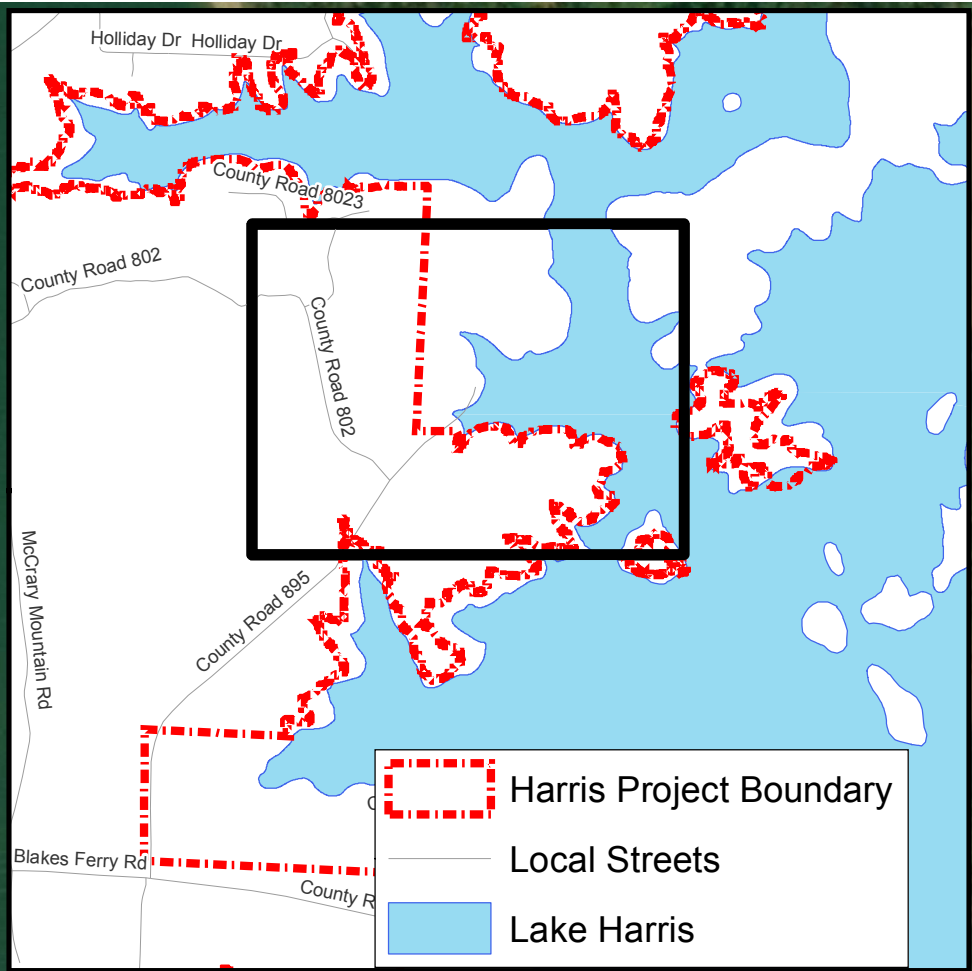


Randolph Co. Rd. 802

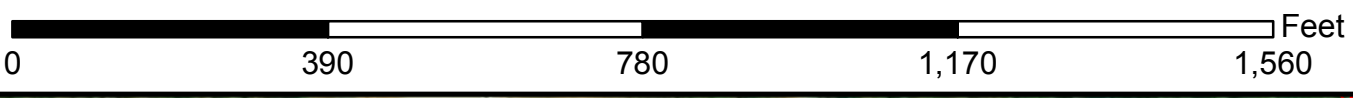
Approximate Extent of Page 2

Randolph Co. Rd. 895



Aerial Imagery of Big Fox Creek Boat Ramp Showing Harris Dam Project Boundary in Relation to Site Relicensing As-Built 2020 Updates P-2628 Sheet 1 of 2

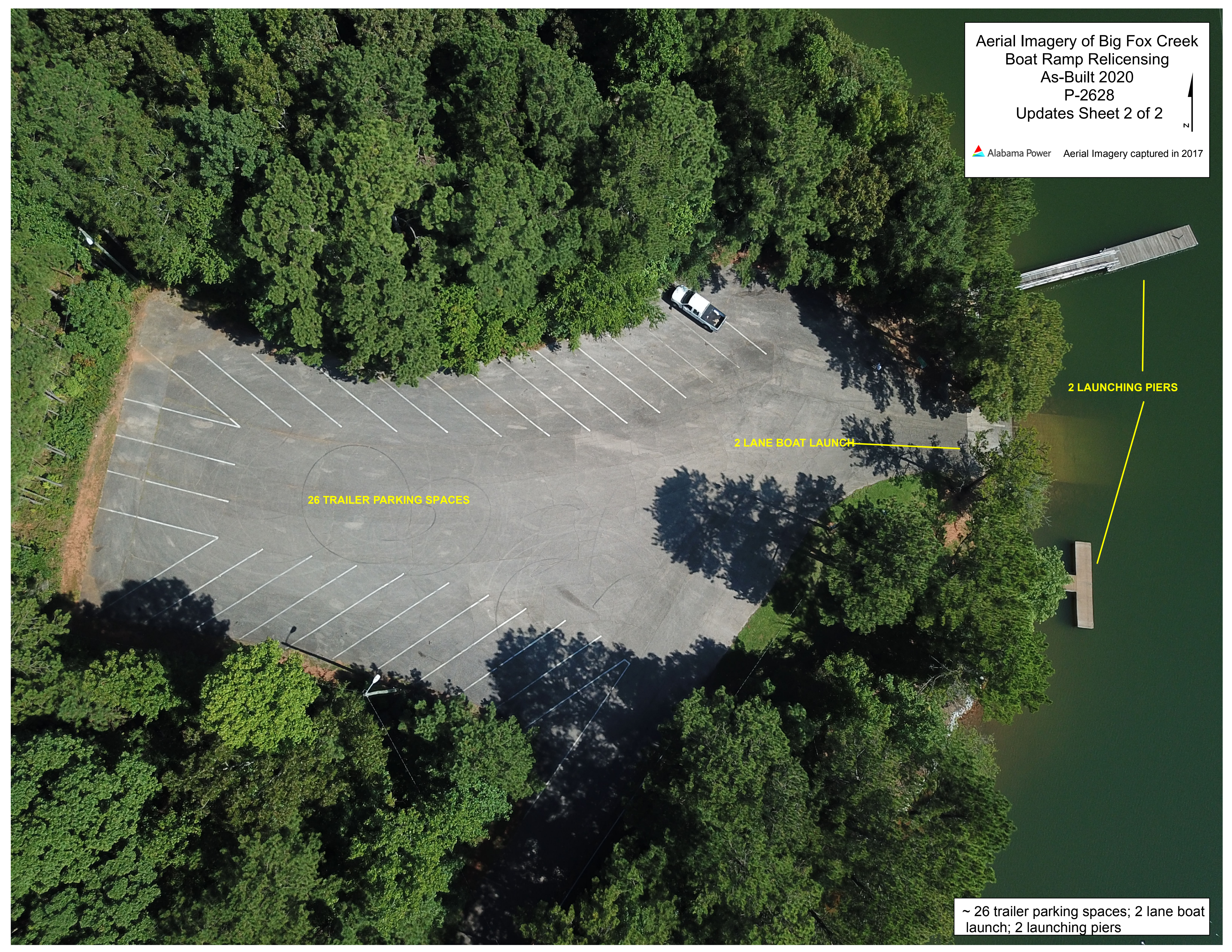
Harris Project Boundary



Alabama Power

Aerial Imagery captured in 2016

Source: Esri, Maxar, GeoEye, Earthstar Geographics, CNES/Airbus DS, USDA, USGS, AeroGRID, IGN, and the GIS User Community

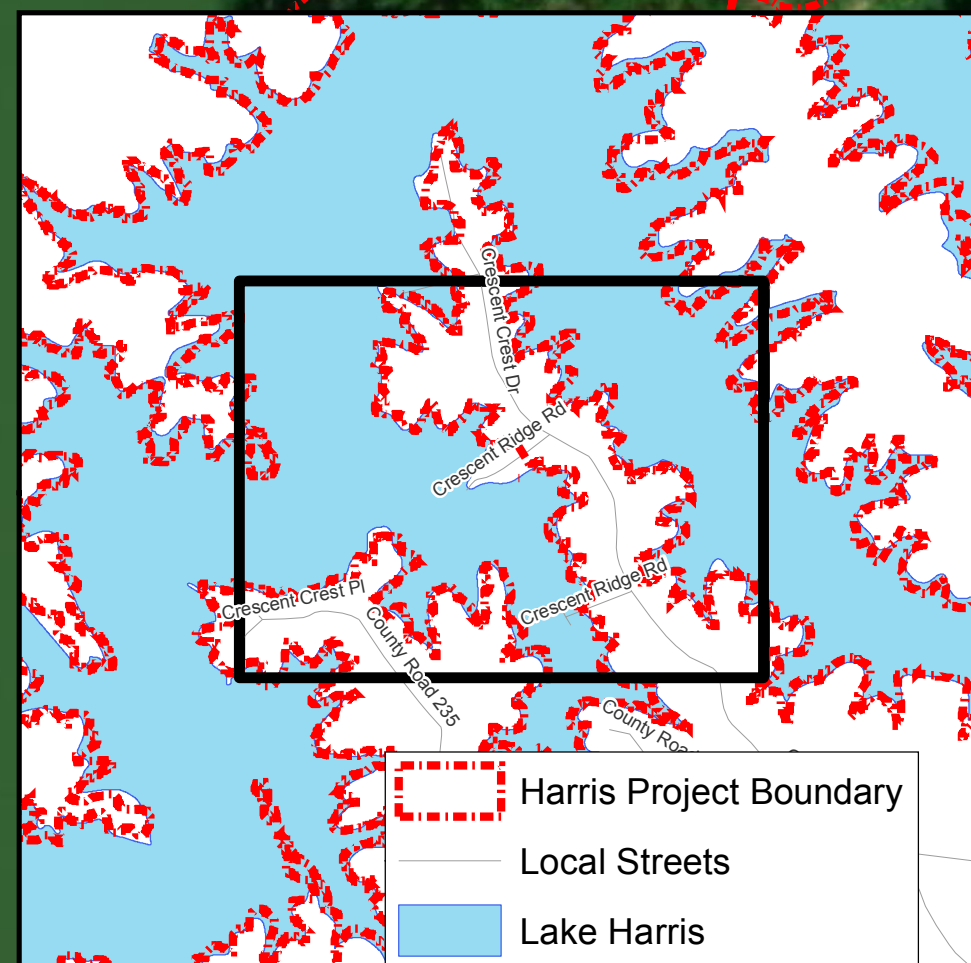
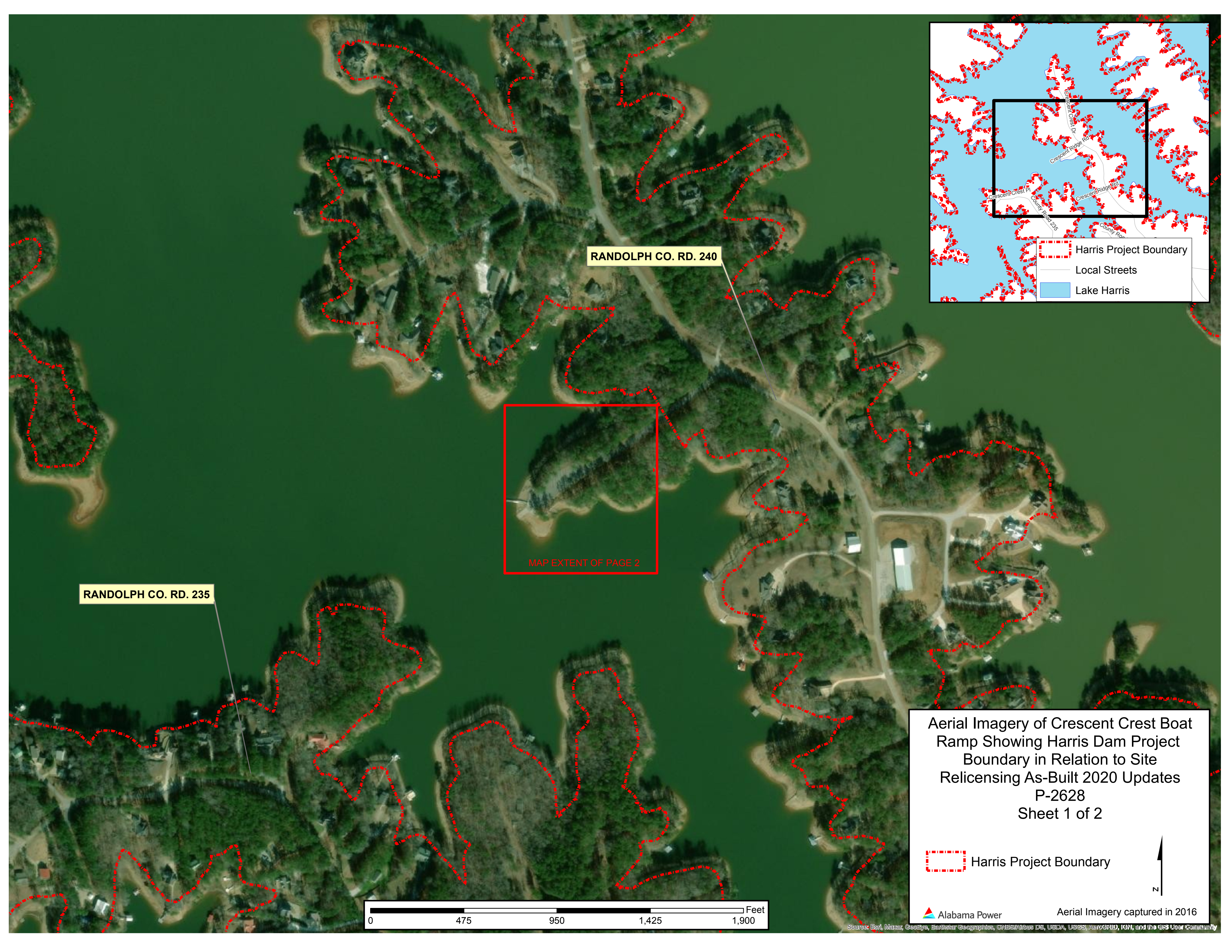


26 TRAILER PARKING SPACES

2 LANE BOAT LAUNCH

2 LAUNCHING PIERS

~ 26 trailer parking spaces; 2 lane boat launch; 2 launching piers



RANDOLPH CO. RD. 240

RANDOLPH CO. RD. 235

MAP EXTENT OF PAGE 2

Aerial Imagery of Crescent Crest Boat Ramp Showing Harris Dam Project Boundary in Relation to Site Relicensing As-Built 2020 Updates P-2628 Sheet 1 of 2

Harris Project Boundary



0 475 950 1,425 1,900 Feet

Alabama Power

Aerial Imagery captured in 2016

Source: Esri, Maxar, GeoEye, Earthstar Geographics, CNES/Airbus DS, USDA, USGS, AeroGRID, IGN, and the GIS User Community



LAUNCHING PIER



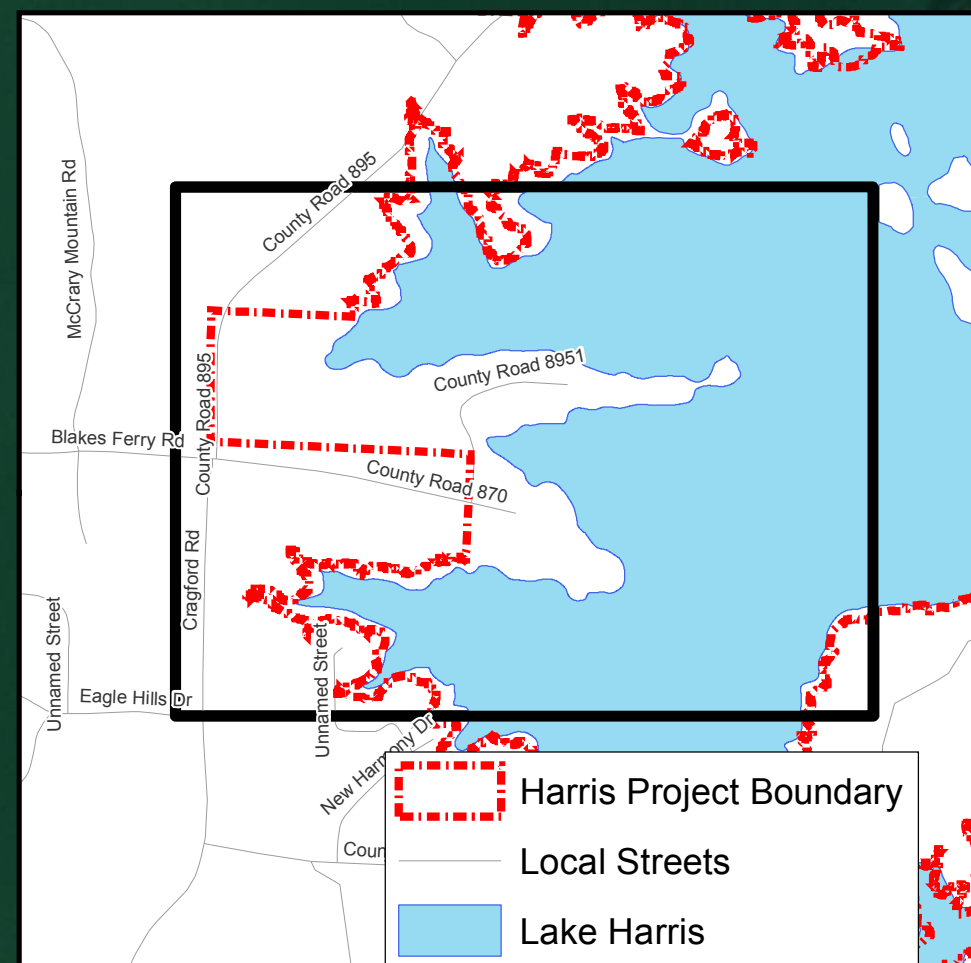
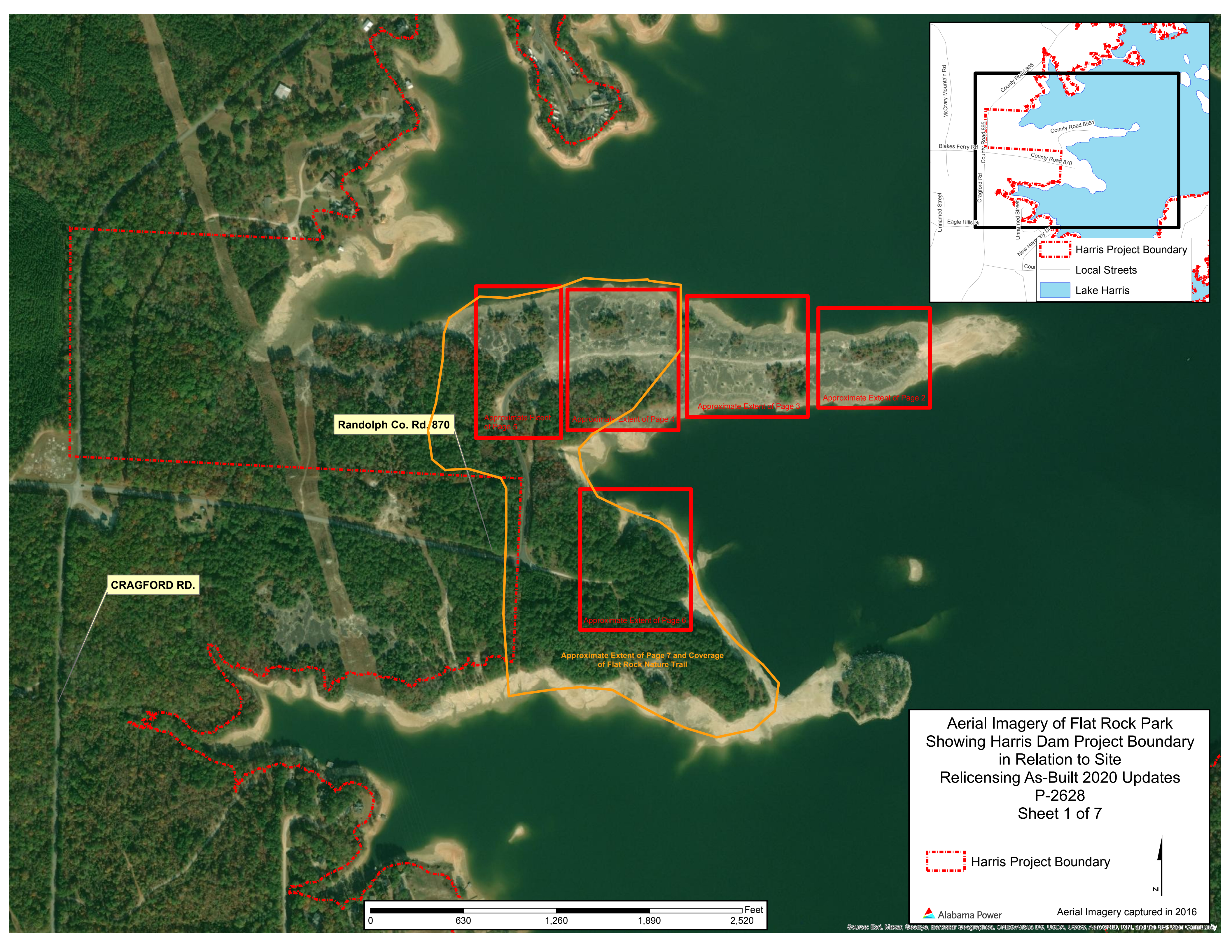
5 SINGLE PARKING SPACES

8 TRAILER PARKING SPACES

1 BARRIER-FREE TRAILER PARKING SPACE

2 LANE BOAT LAUNCH

~8 trailer parking spaces and 1 barrier-free trailer parking space; 5 single parking spaces; 2 lane boat launch, 1 launching pier



Randolph Co. Rd. 870

CRAFORD RD.

Approximate Extent of Page 5

Approximate Extent of Page 4

Approximate Extent of Page 3

Approximate Extent of Page 2

Approximate Extent of Page 6

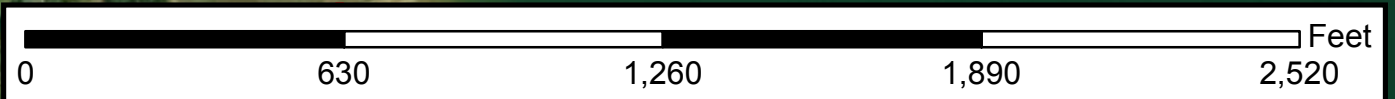
Approximate Extent of Page 7 and Coverage of Flat Rock Nature Trail

Aerial Imagery of Flat Rock Park Showing Harris Dam Project Boundary in Relation to Site Relicensing As-Built 2020 Updates P-2628 Sheet 1 of 7

Harris Project Boundary

Alabama Power

Aerial Imagery captured in 2016



Source: Esri, Maxar, GeoEye, Earthstar Geographics, CNES/Airbus DS, USDA, USGS, AeroGRID, IGN, and the GIS User Community



SWIM AREA

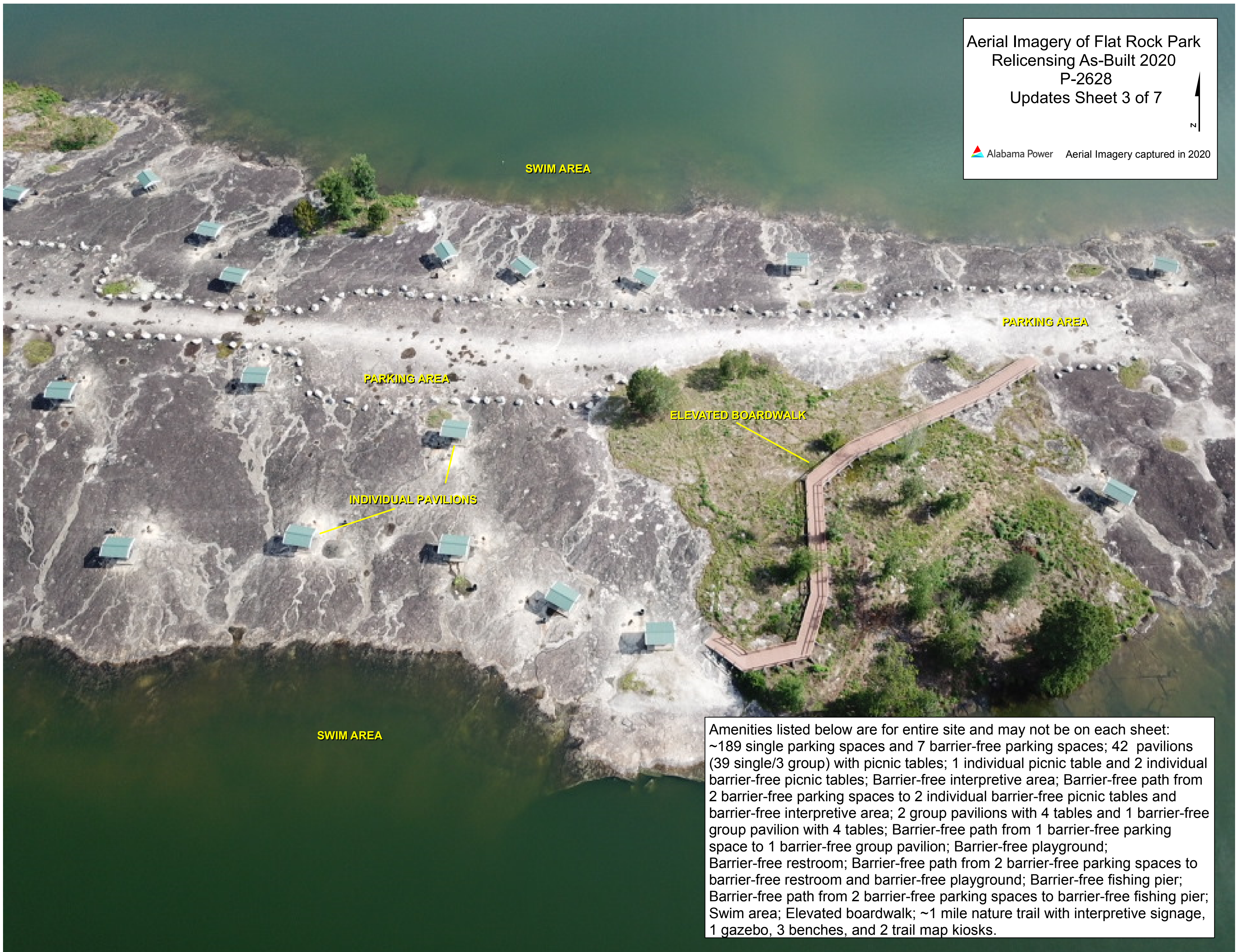
PARKING AREA

SWIM AREA

SWIM AREA



Amenities listed below are for entire site and may not be on each sheet:
~189 single parking spaces and 7 barrier-free parking spaces; 42 pavilions (39 single/3 group) with picnic tables; 1 individual picnic table and 2 individual barrier-free picnic tables; Barrier-free interpretive area; Barrier-free path from 2 barrier-free parking spaces to 2 individual barrier-free picnic tables and barrier-free interpretive area; 2 group pavilions with 4 tables and 1 barrier-free group pavilion with 4 tables; Barrier-free path from 1 barrier-free parking space to 1 barrier-free group pavilion; Barrier-free playground; Barrier-free restroom; Barrier-free path from 2 barrier-free parking spaces to barrier-free restroom and barrier-free playground; Barrier-free fishing pier; Barrier-free path from 2 barrier-free parking spaces to barrier-free fishing pier; Swim area; Elevated boardwalk; ~1 mile nature trail with interpretive signage, 1 gazebo, 3 benches, and 2 trail map kiosks.



SWIM AREA

PARKING AREA

PARKING AREA

ELEVATED BOARDWALK

INDIVIDUAL PAVILIONS

SWIM AREA

Amenities listed below are for entire site and may not be on each sheet:
~189 single parking spaces and 7 barrier-free parking spaces; 42 pavilions (39 single/3 group) with picnic tables; 1 individual picnic table and 2 individual barrier-free picnic tables; Barrier-free interpretive area; Barrier-free path from 2 barrier-free parking spaces to 2 individual barrier-free picnic tables and barrier-free interpretive area; 2 group pavilions with 4 tables and 1 barrier-free group pavilion with 4 tables; Barrier-free path from 1 barrier-free parking space to 1 barrier-free group pavilion; Barrier-free playground; Barrier-free restroom; Barrier-free path from 2 barrier-free parking spaces to barrier-free restroom and barrier-free playground; Barrier-free fishing pier; Barrier-free path from 2 barrier-free parking spaces to barrier-free fishing pier; Swim area; Elevated boardwalk; ~1 mile nature trail with interpretive signage, 1 gazebo, 3 benches, and 2 trail map kiosks.

SWIM AREA

Aerial Imagery of Flat Rock Park
Relicensing As-Built 2020
P-2628
Updates Sheet 4 of 7



Alabama Power Aerial Imagery captured in 2020

SWIM AREA



GROUP PAVILION

INDIVIDUAL PAVILIONS

PARKING AREA

PARKING AREA

PARKING AREA

PARKING AREA



BARRIER-FREE SINGLE PARKING SPACE WITH BARRIER-FREE PATH TO BARRIER-FREE GROUP PAVILION

Amenities listed below are for entire site and may not be on each sheet:
~189 single parking spaces and 7 barrier-free parking spaces; 42 pavilions (39 single/3 group) with picnic tables; 1 individual picnic table and 2 individual barrier-free picnic tables; Barrier-free interpretive area; Barrier-free path from 2 barrier-free parking spaces to 2 individual barrier-free picnic tables and barrier-free interpretive area; 2 group pavilions with 4 tables and 1 barrier-free group pavilion with 4 tables; Barrier-free path from 1 barrier-free parking space to 1 barrier-free group pavilion; Barrier-free playground; Barrier-free restroom; Barrier-free path from 2 barrier-free parking spaces to barrier-free restroom and barrier-free playground; Barrier-free fishing pier; Barrier-free path from 2 barrier-free parking spaces to barrier-free fishing pier; Swim area; Elevated boardwalk; ~1 mile nature trail with interpretive signage, 1 gazebo, 3 benches, and 2 trail map kiosks.



NATURE TRAIL

TRAIL MAP KIOSK

PARK ATTENDANT OFFICE

INDIVIDUAL PAVILIONS

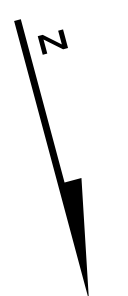
GROUP PAVILION

PARKING AREA

PARKING AREA

PARKING AREA

Amenities listed below are for entire site and may not be on each sheet:
 ~189 single parking spaces and 7 barrier-free parking spaces; 42 pavilions (39 single/3 group) with picnic tables; 1 individual picnic table and 2 individual barrier-free picnic tables; Barrier-free interpretive area; Barrier-free path from 2 barrier-free parking spaces to 2 individual barrier-free picnic tables and barrier-free interpretive area; 2 group pavilions with 4 tables and 1 barrier-free group pavilion with 4 tables; Barrier-free path from 1 barrier-free parking space to 1 barrier-free group pavilion; Barrier-free playground; Barrier-free restroom; Barrier-free path from 2 barrier-free parking spaces to barrier-free restroom and barrier-free playground; Barrier-free fishing pier; Barrier-free path from 2 barrier-free parking spaces to barrier-free fishing pier; Swim area; Elevated boardwalk; ~1 mile nature trail with interpretive signage, 1 gazebo, 3 benches, and 2 trail map kiosks.



NATURE TRAIL

PARKING AREA

BARRIER-FREE FISHING PIER



2 BARRIER-FREE SINGLE VEHICLE SPACES WITH BARRIER-FREE PATH TO BARRIER-FREE FISHING PIER

Amenities listed below are for entire site and may not be on each sheet:
~189 single parking spaces and 7 barrier-free parking spaces; 42 pavilions (39 single/3 group) with picnic tables; 1 individual picnic table and 2 individual barrier-free picnic tables; Barrier-free interpretive area; Barrier-free path from 2 barrier-free parking spaces to 2 individual barrier-free picnic tables and barrier-free interpretive area; 2 group pavilions with 4 tables and 1 barrier-free group pavilion with 4 tables; Barrier-free path from 1 barrier-free parking space to 1 barrier-free group pavilion; Barrier-free playground; Barrier-free restroom; Barrier-free path from 2 barrier-free parking spaces to barrier-free restroom and barrier-free playground; Barrier-free fishing pier; Barrier-free path from 2 barrier-free parking spaces to barrier-free fishing pier; Swim area; Elevated boardwalk; ~1 mile nature trail with interpretive signage, 1 gazebo, 3 benches, and 2 trail map kiosks.

Imagery of Flat Rock Park Nature Trail Relicensing As-Built 2020
P-2628
Updates Sheet 7 of 7

N

Alabama Power



Amenities listed below are for entire site and may not be on each sheet:
~189 single parking spaces and 7 barrier-free parking spaces; 42 pavilions (39 single/3 group) with picnic tables; 1 individual picnic table and 2 individual barrier-free picnic tables; Barrier-free interpretive area; Barrier-free path from 2 barrier-free parking spaces to 2 individual barrier-free picnic tables and barrier-free interpretive area; 2 group pavilions with 4 tables and 1 barrier-free group pavilion with 4 tables; Barrier-free path from 1 barrier-free parking space to 1 barrier-free group pavilion; Barrier-free playground; Barrier-free restroom; Barrier-free path from 2 barrier-free parking spaces to barrier-free restroom and barrier-free playground; Barrier-free fishing pier; Barrier-free path from 2 barrier-free parking spaces to barrier-free fishing pier; Swim area; Elevated boardwalk; ~1 mile nature trail with interpretive signage, 1 gazebo, 3 benches, and 2 trail map kiosks.

THE PRESERVES
INTERPRETIVE SIGNAGE

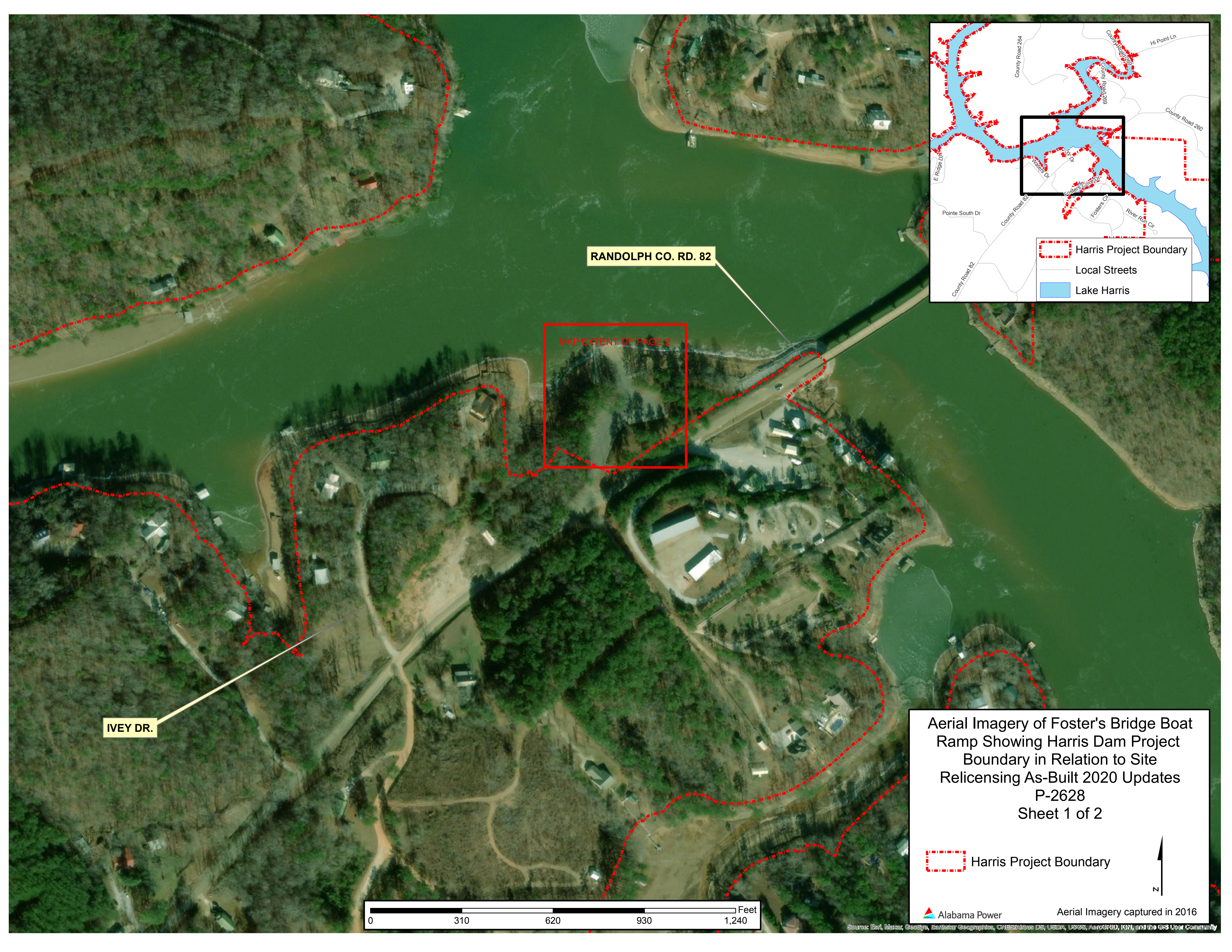
WHAT IS A GLADE?
A GLADE IS AN OPEN AREA, SOMETIMES WITHIN WOODLANDS, WITH EXPOSED BEDROCK (IN THIS CASE GRANITE) AND SHALLOW SOILS. THE OPEN AREAS WERE HISTORICALLY MAINTAINED BY DISTURBANCES SUCH AS FIRE.

HOW ARE GRASSES PLANTED?
GRASSES PLANTED IN THESE SPACES GLADES OR OUTCROPS, CREATE A LIMITED HABITAT FOR PLANTS THAT ARE NOT SUITABLE FOR THE WOODLANDS.

WHY ARE GRASSES PLANTED?
WITHIN THE GRADES, THE SOILS ARE VERY SANDY AND DRAINAGE IS EXCELLENT. THE GRASSES ARE PLANTED TO STABILIZE THE SOILS AND TO PROVIDE A HABITAT FOR PLANTS THAT ARE SUITABLE FOR THE GRADES.

WHY ARE GRASSES PLANTED?
GRASSES PLANTED IN THESE SPACES GLADES OR OUTCROPS, CREATE A LIMITED HABITAT FOR PLANTS THAT ARE NOT SUITABLE FOR THE WOODLANDS.

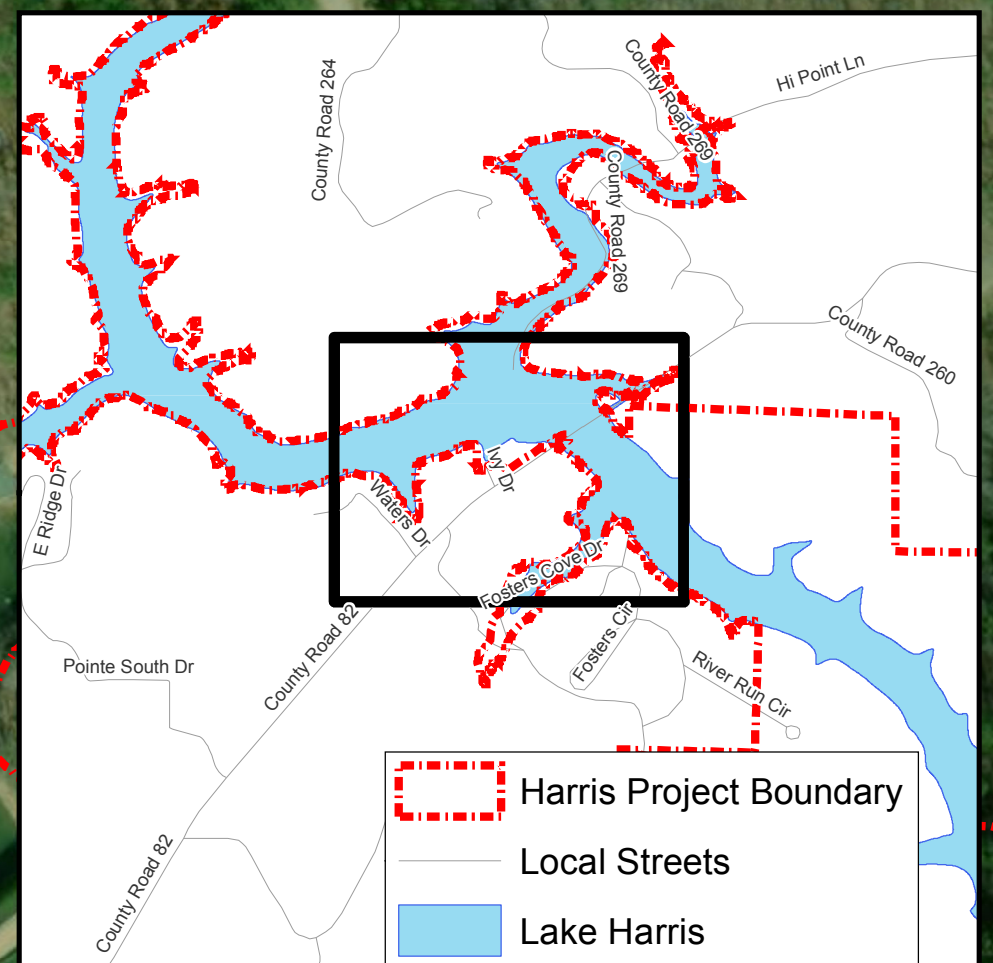




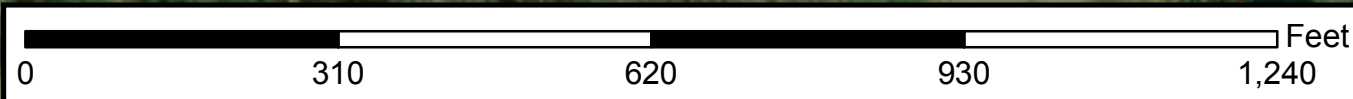
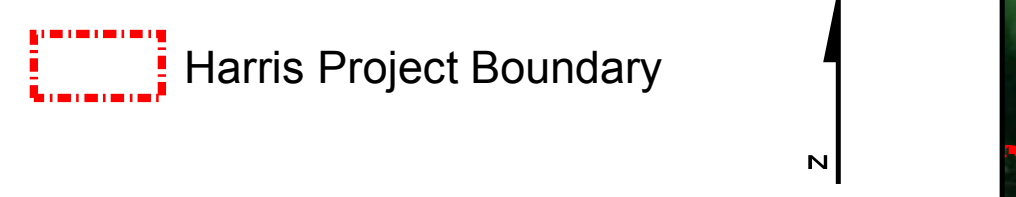
RANDOLPH CO. RD. 82

IVEY DR.

MAP EXTENT OF PAGE 2



Aerial Imagery of Foster's Bridge Boat Ramp Showing Harris Dam Project Boundary in Relation to Site Relicensing As-Built 2020 Updates P-2628 Sheet 1 of 2



Aerial Imagery of Foster's Bridge
Boat Ramp
Relicensing As-Built 2020
P-2628
Updates Sheet 2 of 2



Alabama Power Aerial Imagery captured in 2020

2 LAUNCHING PIERS

2 LANE BOAT LAUNCH

18 TRAILER PARKING SPACES

PATH FROM BOAT LAUNCH TO LAUNCHING PIER

~18 trailer parking spaces; 2 lane boat launch; 2 launching piers; Path from boat launch to launching pier

