

**A BOTANICAL INVENTORY OF A 35-ACRE  
PARCEL AT FLAT ROCK PARK,  
BLAKE'S FERRY, ALABAMA**

**A report prepared for**

**ALABAMA POWER COMPANY**

**by**

James T. Diggs, Katie N. Horton, Daniel Spaulding,  
David M. Frings

December 29, 2020

## Introduction

This botanical inventory, begun in March 2020, was undertaken to catalog all plant species present at a 35-acre parcel at the rare Blake's Ferry Pluton, located adjacent to Alabama Power Company's (Alabama Power) Flat Rock Park (Flat Rock) on Lake Harris at 7115 CR 870 Wedowee, AL 36278. The area of the botanical inventory (Inventory Area) is delineated in Figure 1. This botanical inventory is intended to support the Alabama Glade Conservation Coalition's August 28, 2018 request to reclassify this 35-acre parcel of Flat Rock Park from "Recreational" to "Natural/Undeveloped", affording the natural plant and animal community at this location protection from potential future degradation.

The Inventory Area consists of approximately 35 acres of woodland habitat adjacent to the popular Flat Rock recreational area on Lake Harris. The proximity of this wooded tract to the rare granite pluton allows animals to take potential shelter during the heat of Alabama summer, and creates safe habitat for vulnerable animals such as the Carolina box turtle (*Terrapene carolina*) during their breeding season. It may be worth noting that while some areas in the land originally surveyed adjacent to the visitor-accessible portion of Flat Rock appeared to have only become wooded in the absence of fire maintenance, this 35-acre plot appeared to be older natural forest with deep roots rather than an encroachment onto the granite pluton. We found that several indicators of a rich and healthy forest were present, including *Collinsonia canadensis*, *Platanthera clavellata*, and *Listera australis* with a healthy population of native azaleas (*Rhododendron* sp.) on neighboring lands. These rich forests provide an important buffer zone for the rare granite outcrop community at the heart of Flat Rock.

The field team of botanists (Diggs, Spaulding, and Horton) began this inventory in March 2020, and visited the site at least monthly throughout the growing season, with the final field day occurring on October 25, 2020. We walked the entire 35-acre property during each visit, paying careful attention to specialized habitats on the parcel that were likely to harbor additional or more ecologically-restricted species (wetlands, power line cuts, rich woodlands, grasslands, etc.). All plant species were identified either in the field, or in cases where identification was more difficult, a voucher specimen was taken for later identification in the laboratory. All vouchers are housed at the Anniston Museum of Natural History, Anniston, Alabama (AMAL, Daniel D. Spaulding, curator). All identifications were made *sensu* Weakley (2015)<sup>1</sup>, and all nomenclature was checked against the Alabama Plant Atlas<sup>2</sup>.

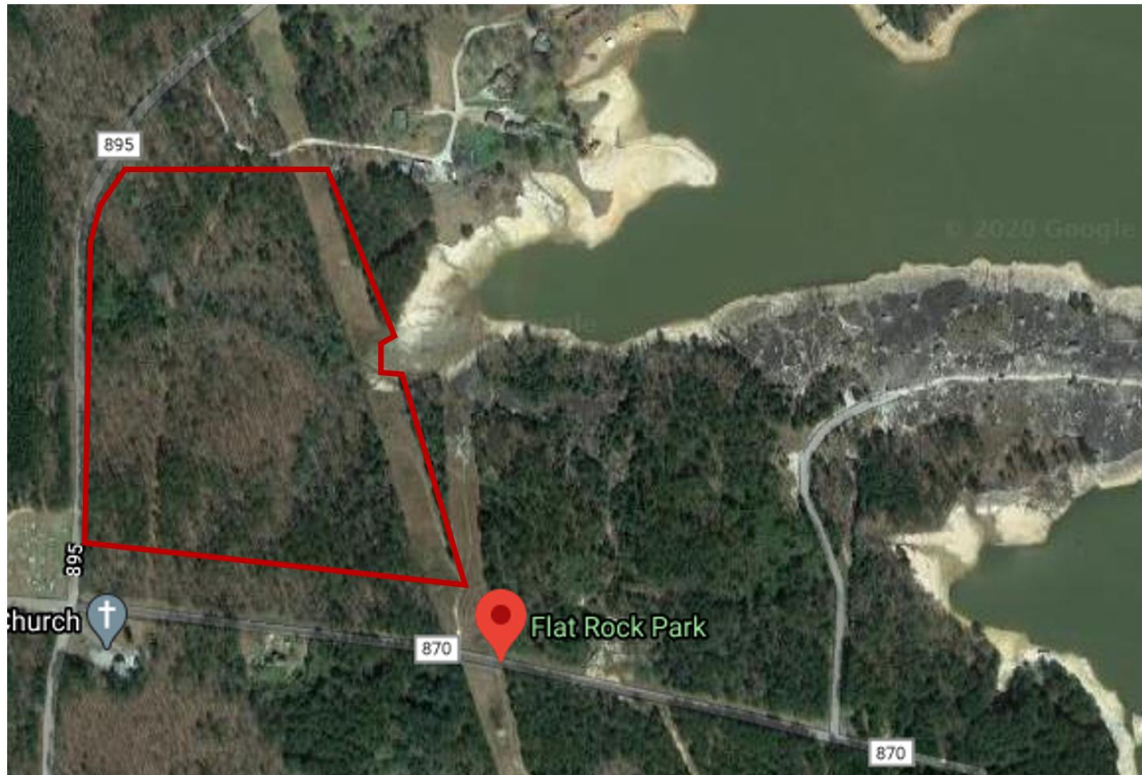
In all, 401 species of plants were documented from the Inventory Area and surrounding buffer areas. These 401 species represent 106 plant families. Several of these species are of federal and/or state conservation concern. These species and their ranks are presented in Table 1. The

---

<sup>1</sup> Weakley, A.S. 2015. Flora of the southern and mid-Atlantic states, working draft of May 2015. University of North Carolina Herbarium, North Carolina Botanical Garden, Chapel Hill, NC.

<sup>2</sup> Keener, B. R., A.R. Diamond, L. J. Davenport, P. G. Davison, S. L. Ginzburg, C. J. Hansen, C. S. Major, D. D. Spaulding, J. K. Triplett, and M. Woods. 2019. [Alabama Plant Atlas](#). [S.M.]Landry and K.N. Campbell (original application development), Florida Center for Community Design and Research. University of South Florida]. University of West Alabama, Livingston, Alabama.

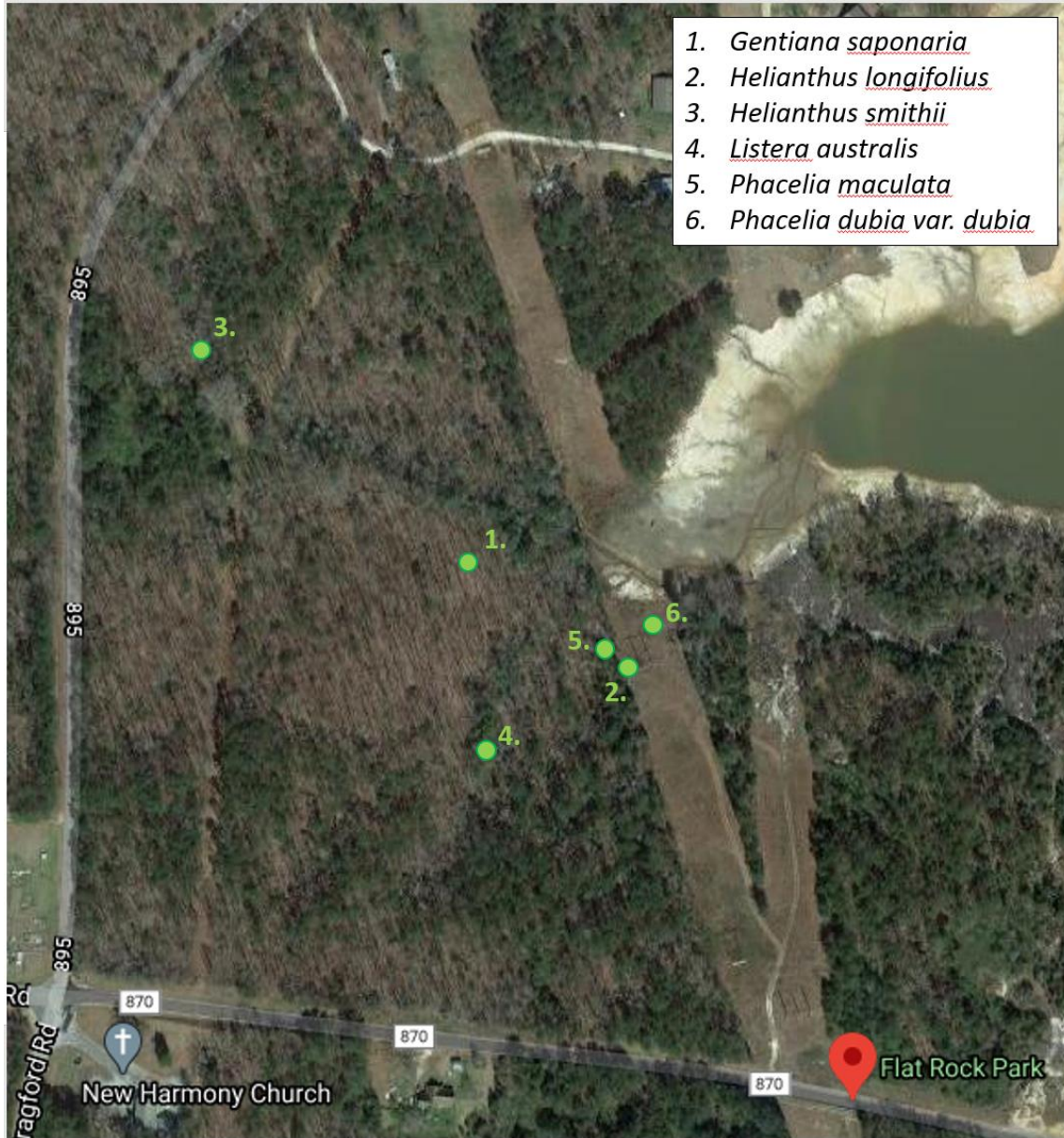
inventory team recorded 43 species that had never been reported for Randolph County (denoted as “County record” within the comments of Table 2). These results are presented in Table 2. The approximate locations for representative populations of the rare species found in Table 1 are shown in the map in Figure 2. There are 44 documented species of non-native taxa (designated “not native” in Table 2) within the Inventory Area, 22 of which are considered invasive by the Southeast Exotic Pest Plant Council (SE-EPPC).<sup>3</sup> These are designated as “invasive” in Table 2. In addition, there are several very large, mature American beech (*Fagus grandifolia*) on the property which should be measured for potential state Champion Tree status.



**FIGURE 1: INVENTORY AREA, APPROXIMATELY 35 ACRES.**

---

<sup>3</sup> Miller, J., Chambliss, E., and Barger, C. 2004. Invasive Plants of the Thirteen Southern States. <https://www.invasive.org/south/seweeds.cfm>



**FIGURE 2: REPRESENTATIVE LOCATIONS OF POPULATIONS OF SPECIES OF CONSERVATION CONCERN FROM TABLE 1.**

**TABLE 1: SPECIES OF CONSERVATION CONCERN DOCUMENTED IN INVENTORY AREA**

Species	Conservation rank
<i>Gentiana saponaria</i> , soapwort gentian	S3
<i>Helianthus longifolius</i> , longleaf sunflower	S1S2, G3
<i>Helianthus smithii</i> , Smith’s sunflower	S2, G2
<i>Listera australis</i> , southern twayblade orchid	S2, G4
<i>Phacelia maculata</i> , spotted scorpion weed	S1, G3
<i>Phacelia dubia</i> var. <i>dubia</i>	S1S2

Legend: In all rankings, “S” denotes the range of the plant in the state of Alabama. “G” denotes the entire natural range of the plant.<sup>4</sup>

- G1 or S1: Critically Imperiled — At very high risk of extinction or elimination due to very restricted range, very few populations or occurrences, very steep declines, very severe threats, or other factors. S1 denotes fewer than 5 known occurrences within the state.
- G2 or S2: Imperiled — At high risk of extinction or elimination due to restricted range, few populations or occurrences, steep declines, severe threats, or other factors. S2 denotes 6-20 known occurrences within the state.
- G3 or S3: Vulnerable — At moderate risk of extinction or elimination due to a fairly restricted range, relatively few populations or occurrences, recent and widespread declines, threats, or other factors. S3 denotes 21-100 occurrences within the state.
- G4 or S4: Apparently Secure — At fairly low risk of extinction or elimination due to an extensive range and/or many populations or occurrences, but with possible cause for some concern as a result of local recent declines, threats, or other factors. S4 denotes species which are apparently secure within the state.
- G5 or S5: Secure — At very low risk of extinction or elimination due to a very extensive range, abundant populations or occurrences, and little to no concern from declines or threats. S5 denotes species which are demonstrably secure within the state.

---

<sup>4</sup> Master, L. L., D. Faber-Langendoen, R. Bittman, G. A. Hammerson, B. Heidel, L. Ramsay, K. Snow, A. Teucher, and A. Tomaino. 2012. NatureServe Conservation Status Assessments: Factors for Evaluating Species and Ecosystem Risk. NatureServe, Arlington, VA

**TABLE 2: SPECIES DOCUMENTED WITHIN INVENTORY AREA**

	<i>Taxon name</i>	<b>Common name</b>	<b>Family</b>	<b>Comments</b>
1	<i>Acalypha gracilens</i>	Slender three seed mercury	Euphorbiaceae	
2	<i>Acalypha virginica</i>	Virginia three seed mercury	Euphorbiaceae	
3	<i>Acer rubrum</i>	Red maple	Aceraceae	
4	<i>Aesculus pavia</i>	Red buckeye	Hippocastanaceae	
5	<i>Agrimonia parviflora</i>	Harvestlice	Rosaceae	
6	<i>Agrostis hyemalis</i>	Ticklegrass	Poaceae	
7	<i>Agrostis perennans</i>	Autumn bentgrass	Poaceae	
8	<i>Albizia julibrissin</i>	Mimosa	Fabaceae	Not native, invasive
9	<i>Allium canadense</i>	Wild onion	Alliaceae	
10	<i>Allium vineale</i>	Field garlic	Alliaceae	Not native, invasive
11	<i>Alnus serrulata</i>	Tag alder	Betulaceae	
12	<i>Alopecurus carolinianus</i>	Carolina foxtail grass	Poaceae	
13	<i>Ambrosia artemisiifolia</i>	Common ragweed	Asteraceae	
14	<i>Amphicarpaea bracteata</i>	American hog peanut	Fabaceae	
15	<i>Andropogon virginicus</i>	Broom sedge	Poaceae	
16	<i>Anemone quinquefolia</i>	Nightcaps	Ranunculaceae	
17	<i>Apios americana</i>	American groundnut	Fabaceae	
18	<i>Apocynum cannabinum</i>	Hemp dogbane	Apocynaceae	
19	<i>Arisaema pusillum</i>	Small-flowered jack-in-the-pulpit	Araceae	
20	<i>Arundinaria gigantea</i>	River cane	Poaceae	
21	<i>Asclepias amplexicaulis</i>	Clasping milkweed	Apocynaceae	
22	<i>Asclepias variegata</i>	Red ring milkweed	Apocynaceae	
23	<i>Asimina parviflora</i>	Small-flowered pawpaw	Annonaceae	
24	<i>Asplenium platyneuron</i>	Ebony spleenwort	Aspleniaceae	
25	<i>Athyrium asplenioides</i>	Southern lady fern	Athyriaceae	
26	<i>Baccharis halimifolia</i>	Groundsel tree	Asteraceae	

	<i>Taxon name</i>	<b>Common name</b>	<b>Family</b>	<b>Comments</b>
27	<i>Berberis bealei</i>	Leather leaf mahonia	Berberidaceae	Not native, invasive, County record
28	<i>Bignonia capreolata</i>	Cross-vine	Bignoniaceae	
29	<i>Boehmeria cylindrica</i>	False nettle	Urticaceae	
30	<i>Botrychium biternatum</i>	Southern grape fern	Ophioglossaceae	
31	<i>Botrychium dissectum</i>	Cutleaf grape fern	Ophioglossaceae	
32	<i>Botrychium virginianum</i>	Rattlesnake fern	Ophioglossaceae	
33	<i>Briza minor</i>	Lesser quaking grass	Poaceae	Not native
34	<i>Bromus japonicus</i>	Japanese brome	Poaceae	Not native
35	<i>Callicarpa americana</i>	American beautyberry	Lamiaceae	
36	<i>Calycanthus floridus</i>	Carolina allspice	Calycanthaceae	
37	<i>Cardamine hirsuta</i>	Hairy bittercress	Brassicaceae	Not native
38	<i>Carex caroliniana</i>	Carolina sedge	Cyperaceae	County record
39	<i>Carex complanata</i>	Hirsute sedge	Cyperaceae	
40	<i>Carex crinita</i>	Fringed sedge	Cyperaceae	
41	<i>Carex debilis</i>	White-edge sedge	Cyperaceae	
42	<i>Carex festucacea</i>	Fescue sedge	Cyperaceae	
43	<i>Carex leptalea</i>	Bristle stalk sedge	Cyperaceae	
44	<i>Carex lurida</i>	Sallow sedge	Cyperaceae	
45	<i>Carex nigromarginata</i>	Black-edged sedge	Cyperaceae	
46	<i>Carex striatula</i>	Lined sedge	Cyperaceae	
47	<i>Carex styloflexa</i>	Bent sedge	Cyperaceae	
48	<i>Carex tribuloides</i>	Blunt broom sedge	Cyperaceae	
49	<i>Carpinus caroliniana</i>	American hornbeam	Betulaceae	
50	<i>Carya glabra</i>	Pignut hickory	Juglandaceae	
51	<i>Carya tomentosa</i>	Mockernut hickory	Juglandaceae	
52	<i>Centrosema virginianum</i>	Spurred butterfly pea	Fabaceae	
53	<i>Cephalanthus occidentalis</i>	Buttonbush	Rubiaceae	
54	<i>Cerastium glomeratum</i>	Sticky chickweed	Caryophyllaceae	
55	<i>Chamaecrista nictitans</i>	Common sensitive plant	Fabaceae	
56	<i>Chamaecrista fasciculata</i>	Common Partridge Pea	Fabaceae	
57	<i>Chamaelirium luteum</i>	Devil's bit	Melanthiaceae	
58	<i>Chasmanthium latifolium</i>	River Oats	Poaceae	
59	<i>Chasmanthium laxum</i>	Slender wood oats	Poaceae	County record

	<i>Taxon name</i>	<b>Common name</b>	<b>Family</b>	<b>Comments</b>
60	<i>Chasmanthium sessiliflorum</i>	Longleaf wood oats	Poaceae	
61	<i>Chimaphila maculata</i>	Pipsissewa	Ericaceae	
62	<i>Chrysopsis mariana</i>	Maryland golden aster	Asteraceae	
63	<i>Cicuta maculata</i>	Water hemlock	Apiaceae	
64	<i>Clematis virginiana</i>	Virgin's bower	Ranunculaceae	
65	<i>Clitoria mariana</i>	Butterfly pea	Fabaceae	
66	<i>Cocculus carolinus</i>	Carolina snailseed	Menispermaceae	
67	<i>Coleataenia anceps</i>	Beaked panic grass	Poaceae	
68	<i>Coleataenia rigidula</i>	Redtop panic grass	Poaceae	
69	<i>Collinsonia canadensis</i>	Northern horsebalm	Lamiaceae	County record
70	<i>Commelina communis</i>	Asiatic dayflower	Commelinaceae	Not native, invasive
71	<i>Commelina erecta</i>	Erect dayflower	Commelinaceae	
72	<i>Commelina virginica</i>	Virginia dayflower	Commelinaceae	County record
73	<i>Coreopsis auriculata</i>	Eared tickseed	Asteraceae	
74	<i>Coreopsis grandiflora</i> var. <i>grandiflora</i>	Large-flowered tickseed	Asteraceae	
75	<i>Coreopsis major</i>	Woodland tickseed	Asteraceae	
76	<i>Cornus florida</i>	Flowering dogwood	Cornaceae	
77	<i>Croton glandulosus</i>	Vente conmigo	Euphorbiaceae	
78	<i>Croton michauxii</i>	Narrowleaf rushfoil	Euphorbiaceae	
79	<i>Cuscuta campestris</i>	Field dodder	Convolvulaceae	
80	<i>Cuscuta compacta</i>	Love vine	Convolvulaceae	
81	<i>Cuscuta gronovii</i>	Scaldweed	Convolvulaceae	
82	<i>Cyclospermum leptophyllum</i>	Marsh parsley	Apiaceae	County record
83	<i>Cyperus retrofractus</i>	Rough flatsedge	Cyperaceae	County record
84	<i>Cyperus retrorsus</i>	Pinebarren flatsedge	Cyperaceae	
85	<i>Cyperus strigosus</i>	Straw color flatsedge	Cyperaceae	
86	<i>Danthonia sericea</i>	Downy oatgrass	Poaceae	
87	<i>Decumaria barbara</i>	Climbing hydrangea	Hydrangeaceae	
88	<i>Desmodium ciliare</i>	Hairy small-leaf tick-trefoil	Fabaceae	
89	<i>Desmodium paniculatum</i>	Panicled tick- trefoil	Fabaceae	



	<i>Taxon name</i>	<b>Common name</b>	<b>Family</b>	<b>Comments</b>
90	<i>Desmodium rotundifolium</i>	Prostrate tick-trefoil	Fabaceae	
91	<i>Desmodium viridiflorum</i>	Velvetleaf tick-trefoil	Fabaceae	
92	<i>Dichanthelium acuminatum</i> <i>var. lindheimeri</i>	Lindheimer's witch grass	Poaceae	
93	<i>Dichanthelium boscii</i>	Bosc's witchgrass	Poaceae	
94	<i>Dichanthelium clandestinum</i>	Deer tongue witchgrass	Poaceae	
95	<i>Dichanthelium commutatum</i>	Variable witchgrass	Poaceae	
96	<i>Dichanthelium curtifolium</i>	Shortleaf witchgrass	Poaceae	County record
97	<i>Dichanthelium depauperatum</i>	Starved witchgrass	Poaceae	
98	<i>Dichanthelium dichotomum</i> <i>var. dichotomum</i>	Forked witchgrass	Poaceae	
99	<i>Dichanthelium laxiflorum</i>	Lax-flowered witchgrass	Poaceae	
100	<i>Dichanthelium microcarpon</i>	Small-fruit witchgrass	Poaceae	
101	<i>Dichanthelium scoparium</i>	Velvet witchgrass	Poaceae	
102	<i>Dichanthelium sphaerocarpon</i>	Round-fruit witchgrass	Poaceae	
103	<i>Dioscorea polystachya</i>	Chinese yam	Dioscoreaceae	Not native, invasive, County record
104	<i>Dioscorea villosa</i>	Common wild yam	Dioscoreaceae	
105	<i>Diospyros virginiana</i>	American persimmon	Ebenaceae	
106	<i>Diphasiastrum digitatum</i>	Running ground pine	Lycopodiaceae	
107	<i>Dulichium arundinaceum</i>	Three-way sedge	Cyperaceae	
108	<i>Elephantopus carolinianus</i>	Leafy elephant's foot	Asteraceae	
109	<i>Elephantopus tomentosus</i>	Woolly elephant's foot	Asteraceae	
110	<i>Elymus glabriflorus</i>	Southeastern wild rye	Poaceae	
111	<i>Endodeca serpentaria</i>	Virginia snake root	Aristolochiaceae	
112	<i>Eragrostis japonica</i>	Pond lovegrass	Poaceae	Not native, County record
113	<i>Erechtites hieraciifolius</i>	American burnweed	Asteraceae	
114	<i>Erianthus alopecuroides</i>	Silver plume grass	Poaceae	
115	<i>Erigeron annuus</i>	Annual fleabane	Asteraceae	

	<i>Taxon name</i>	<b>Common name</b>	<b>Family</b>	<b>Comments</b>
116	<i>Erigeron canadensis</i>	Common horseweed	Asteraceae	
117	<i>Erigeron philadelphicus</i>	Philadelphia fleabane	Asteraceae	
118	<i>Erigeron strigosus</i>	Common eastern fleabane	Asteraceae	
119	<i>Eryngium prostratum</i>	Creeping eryngo	Apiaceae	
120	<i>Euonymus americanus</i>	American strawberry bush	Celastraceae	
121	<i>Eupatorium album</i>	White thoroughwort	Asteraceae	
122	<i>Eupatorium capillifolium</i>	Common dogfennel	Asteraceae	
123	<i>Eupatorium hyssopifolium</i>	Hyssop-leaf thoroughwort	Asteraceae	
124	<i>Eupatorium rotundifolium</i>	Common roundleaf thoroughwort	Asteraceae	
125	<i>Eupatorium serotinum</i>	Late-flowering thoroughwort	Asteraceae	
126	<i>Euphorbia pubentissima</i>	False flowering spurge	Euphorbiaceae	
127	<i>Euthamia caroliniana</i>	Slender goldentop	Asteraceae	County record
128	<i>Eutrochium fistulosum</i>	Hollow-stem joe pye weed	Asteraceae	
129	<i>Eutrochium purpureum</i>	Sweet-scented Joe Pye weed	Asteraceae	
130	<i>Fagus grandifolia</i>	American beech	Fagaceae	
131	<i>Fallopia scandens</i>	Climbing false buckwheat	Polygonaceae	County record
132	<i>Festuca myuros</i>	Rat tail fescue	Poaceae	Not native
133	<i>Fraxinus biltmoreana</i>	Biltmore ash	Oleaceae	County record
134	<i>Fraxinus pennsylvanica</i>	Green ash	Oleaceae	
135	<i>Galactia regularis</i>	Eastern milk pea	Fabaceae	
136	<i>Galium uniflorum</i>	One-flower bedstraw	Rubiaceae	
137	<i>Gamochaeta chionesthes</i>	White cloaked cudweed	Asteraceae	Not native
138	<i>Gelsemium sempervirens</i>	Carolina jessamine	Gelsemiaceae	
139	<i>Gentiana saponaria</i>	Soapwort gentian	Gentianaceae	S3
140	<i>Geranium carolinianum</i>	Carolina geranium	Geraniaceae	
141	<i>Gladiolus X gandavensis</i>	Garden gladiolus	Iridaceae	
142	<i>Gleditsia triacanthos</i>	Honey locust	Fabaceae	
143	<i>Goodyera pubescens</i>	Downy rattlesnake plantain	Orchidaceae	

	<i>Taxon name</i>	<b>Common name</b>	<b>Family</b>	<b>Comments</b>
144	<i>Gratiola neglecta</i>	Clammy hedge hyssop	Plantaginaceae	County record
145	<i>Helianthus angustifolius</i>	Narrowleaf sunflower	Asteraceae	
146	<i>Helianthus hirsutus</i>	Hairy sunflower	Asteraceae	
147	<i>Helianthus longifolius</i>	Longleaf sunflower	Asteraceae	S1S2, G3
148	<i>Helianthus microcephalus</i>	Small head sunflower	Asteraceae	
149	<i>Helianthus smithii</i>	Smith's sunflower	Asteraceae	S2, G2
150	<i>Hemerocallis fulva</i>	Orange day lily	Hemerocallidaceae	Not native, invasive
151	<i>Heuchera americana</i>	American alumroot	Saxifragaceae	
152	<i>Hexasepalum teres</i>	Poor Joe	Rubiaceae	
153	<i>Hexastylis arifolia</i>	Little brown jug	Aristolochiaceae	
154	<i>Hibiscus laevis</i>	Smooth rose mallow	Malvaceae	County record
155	<i>Hieracium venosum</i>	Veiny hawkweed	Asteraceae	
156	<i>Hieracium gronovii</i>	Hairy hawkweed	Asteraceae	
157	<i>Hordeum pusillum</i>	Mouse barley	Poaceae	
158	<i>Houstonia caerulea</i>	Common bluet	Rubiaceae	
159	<i>Houstonia purpurea</i>	Summer bluet	Rubiaceae	
160	<i>Houstonia pusilla</i>	Tiny bluet	Rubiaceae	
161	<i>Houstonia tenuifolia</i>	Slender leaf bluet	Rubiaceae	
162	<i>Hydrocotyle verticillata</i>	Whorled pennywort	Araliaceae	
163	<i>Hylodesmum nudiflorum</i>	Naked flower tick- trefoil	Fabaceae	
164	<i>Hypericum crux-andreae</i>	St. Peter's wort	Hypericaceae	
165	<i>Hypericum drummondii</i>	Nits and lice	Hypericaceae	
166	<i>Hypericum gentianoides</i>	Orange grass	Hypericaceae	
167	<i>Hypericum hypericoides</i>	St. Andrew's cross	Hypericaceae	
168	<i>Hypericum mutilum</i>	Dwarf St. John's wort	Hypericaceae	
169	<i>Hypericum punctatum</i>	Spotted St. John's wort	Hypericaceae	
170	<i>Hypericum virgatum</i>	Sharpleaf St. John's wort	Hypericaceae	
171	<i>Hypochaeris radicata</i>	Hairy cat's ear	Asteraceae	Not native
172	<i>Hypoxis hirsuta</i>	Common star grass	Hypoxidaceae	
173	<i>Ilex longipes</i>	Georgia holly	Aquifoliaceae	County record
174	<i>Ilex opaca</i>	American holly	Aquifoliaceae	
175	<i>Ilex verticillata</i>	Black alder	Aquifoliaceae	

	<b><i>Taxon name</i></b>	<b>Common name</b>	<b>Family</b>	<b>Comments</b>
176	<i>Impatiens capensis</i>	Orange jewelweed	Balsaminaceae	
177	<i>Ipomoea hederifolia</i>	Scarlet creeper	Convolvulaceae	Not native, County record
178	<i>Ipomoea pandurata</i>	Man of the Earth	Convolvulaceae	
179	<i>Iris cristata</i>	Dwarf crested iris	Iridaceae	County record
180	<i>Iris verna</i>	Upland dwarf iris	Iridaceae	
181	<i>Iris virginica</i>	Blue flag iris	Iridaceae	
182	<i>Juglans nigra</i>	Black walnut	Juglandaceae	
183	<i>Juncus acuminatus</i>	Sharp fruit rush	Juncaceae	
184	<i>Juncus biflorus</i>	Bog rush	Juncaceae	County record
185	<i>Juncus coriaceous</i>	Leathery rush	Juncaceae	
186	<i>Juncus effusus</i>	Soft rush	Juncaceae	
187	<i>Juncus tenuis</i>	Path rush	Juncaceae	
188	<i>Juniperus virginiana</i>	Eastern redcedar	Cupressaceae	
189	<i>Kelochloa verrucosa</i>	Warty panic grass	Poaceae	
190	<i>Krigia biflora</i>	Two-flower dwarf dandelion	Asteraceae	
191	<i>Krigia cespitosa</i>	Common dwarf dandelion	Asteraceae	
192	<i>Krigia virginica</i>	Virginia dwarf dandelion	Asteraceae	
193	<i>Lactuca canadensis</i>	Wild lettuce	Asteraceae	
194	<i>Lactuca floridana</i>	Woodland lettuce	Asteraceae	
195	<i>Lactuca serriola</i>	Prickly lettuce	Asteraceae	Not native
196	<i>Landoltia punctata</i>	Dotted duckweed	Araceae	Not native
197	<i>Lechea racemulosa</i>	Oblong fruit pinweed	Cistaceae	
198	<i>Leersia virginica</i>	White cutgrass	Poaceae	County record
199	<i>Lespedeza repens</i>	Creeping bush clover	Fabaceae	
200	<i>Lespedeza virginica</i>	Slender bush clover	Fabaceae	
201	<i>Liatris elegantula</i>	Grassleaf blazing star	Asteraceae	
202	<i>Liatris microcephala</i>	Small head blazing star	Asteraceae	
203	<i>Liatris spicata</i>	Dense blazing star	Asteraceae	
204	<i>Ligustrum japonicum</i>	Japanese privet	Oleaceae	Not native, invasive, County record
205	<i>Ligustrum sinense</i>	Chinese privet	Oleaceae	Not native, invasive
206	<i>Lilium michauxii</i>	Carolina lily	Liliaceae	
207	<i>Linaria canadensis</i>	Common toadflax	Plantaginaceae	

	<i>Taxon name</i>	<b>Common name</b>	<b>Family</b>	<b>Comments</b>
208	<i>Linum medium var. texanum</i>	Texas yellow flax	Linaceae	
209	<i>Linum striatum</i>	Ridged yellow flax	Linaceae	
210	<i>Liquidambar styraciflua</i>	Sweetgum	Altingiaceae	
211	<i>Liriodendron tulipifera</i>	Tulip poplar	Magnoliaceae	
212	<i>Liriope spicata</i>	Creeping turf lily	Ruscaceae	
213	<i>Listera australis</i>	Southern twayblade	Orchidaceae	County record, S2, G4
214	<i>Lobelia inflata</i>	Indian tobacco	Campanulaceae	
215	<i>Lobelia puberula</i>	Downy lobelia	Campanulaceae	
216	<i>Lolium arundinaceum</i>	Tall fescue	Poaceae	Not native, invasive
217	<i>Lonicera japonica</i>	Japanese honeysuckle	Caprifoliaceae	Not native, invasive
218	<i>Lorinseria areolata</i>	Netted chain fern	Blechnaceae	
219	<i>Ludwigia alternifolia</i>	Alternate-leaf seedbox	Onagraceae	
220	<i>Ludwigia decurrens</i>	Wingstem water primrose	Onagraceae	
221	<i>Ludwigia palustris</i>	Marsh seedbox	Onagraceae	
222	<i>Luzula bulbosa</i>	Bulbous wood rush	Juncaceae	
223	<i>Lycopus rubellus</i>	Stalked bugleweed	Lamiaceae	County record
224	<i>Lycopus virginicus</i>	Virginia bugleweed	Lamiaceae	
225	<i>Lygodium japonicum</i>	Japanese climbing fern	Lygodiaceae	Not native, invasive
226	<i>Lysimachia ciliata</i>	Fringed loosestrife	Primulaceae	
227	<i>Macrothelypteris torresiana</i>	Mariana maiden fern	Thelypteridaceae	Not native, County record
228	<i>Magnolia grandiflora</i>	Southern magnolia	Magnoliaceae	
229	<i>Magnolia virginiana</i>	Sweet bay magnolia	Magnoliaceae	
230	<i>Maianthemum racemosum</i>	Solomon's plume	Ruscaceae	
231	<i>Malaxis unifolia</i>	Green adder's mouth orchid	Orchidaceae	
232	<i>Matelea carolinensis</i>	Carolina milkvine	Apocynaceae	
233	<i>Mazus pumilus</i>	Japanese mazus	Mazaceae	Not native
234	<i>Melothria pendula</i>	Melonette	Cucurbitaceae	
235	<i>Microstegium vimineum</i>	Japanese stilt grass	Poaceae	Not native, invasive
236	<i>Mikania scandens</i>	Climbing hempvine	Asteraceae	
237	<i>Mimosa microphylla</i>	Littleleaf mimosa	Fabaceae	
238	<i>Mitchella repens</i>	Partridge berry	Rubiaceae	

	<i>Taxon name</i>	<b>Common name</b>	<b>Family</b>	<b>Comments</b>
239	<i>Monarda fistulosa</i>	Eastern bergamot	Lamiaceae	
240	<i>Monotropa uniflora</i>	Ghost plant	Ericaceae	
241	<i>Morus rubra</i>	Red mulberry	Moraceae	
242	<i>Muhlenbergia schreberi</i>	Nimblewill	Poaceae	
243	<i>Muscadinia rotundifolia</i>	Muscadine	Vitaceae	
244	<i>Nabalus altissimus</i>	Tall rattlesnake root	Asteraceae	
245	<i>Nandina domestica</i>	Heavenly bamboo	Berberidaceae	County record, not native, invasive
246	<i>Narcissus pseudonarcissus</i>	Common daffodil	Amaryllidaceae	Not native
247	<i>Narcissus x odorus</i>	Campernelle Jonquil	Amaryllidaceae	Not native
248	<i>Nyssa sylvatica</i>	Black gum	Nyssaceae	
249	<i>Oenothera biennis</i>	Common evening primrose	Onagraceae	
250	<i>Oenothera fruticosa</i> var. <i>subglobosa</i>	Flatrock sundrops	Onagraceae	
251	<i>Oenothera linifolia</i>	Threadleaf sundrops	Onagraceae	
252	<i>Onoclea sensibilis</i>	Sensitive fern	Onocleaceae	
253	<i>Ophioglossum pycnostichum</i>	Southern adder's tongue	Ophioglossaceae	County record
254	<i>Opuntia cespitosa</i>	Red-flowered prickly pear	Cactaceae	
255	<i>Osmundastrum cinnamomeum</i>	Cinnamon fern	Osmundaceae	
256	<i>Oxalis dillenii</i>	Gray green wood sorrel	Oxalidaceae	
257	<i>Oxalis stricta</i>	Common yellow wood sorrel	Oxalidaceae	
258	<i>Oxalis violacea</i>	Violet wood sorrel	Oxalidaceae	
259	<i>Oxydendrum arboreum</i>	Sourwood	Ericaceae	
260	<i>Packera anonyma</i>	Appalachian ragwort	Asteraceae	
261	<i>Parathelypteris noveboracensis</i>	New York fern	Thelypteridaceae	
262	<i>Parthenocissus quinquefolia</i>	Virginia creeper	Vitaceae	
263	<i>Paspalum dilatatum</i>	Golden crowngrass	Poaceae	Not native
264	<i>Paspalum setaceum</i>	Slender crowngrass	Poaceae	County record
265	<i>Passiflora incarnata</i>	Purple passion flower	Passifloraceae	
266	<i>Passiflora lutea</i>	Yellow passion flower	Passifloraceae	
267	<i>Penstemon australis</i>	Southern beardtongue	Plantaginaceae	

	<b><i>Taxon name</i></b>	<b>Common name</b>	<b>Family</b>	<b>Comments</b>
268	<i>Perilla frutescens</i>	Beefsteak plant	Lamiaceae	Not native, invasive, County record
269	<i>Persicaria hydropiperoides</i>	Swamp smartweed	Polygonaceae	
270	<i>Persicaria longiseta</i>	Long Bristle Smartweed	Polygonaceae	Not native, invasive
271	<i>Persicaria setacea</i>	Bog Smartweed	Polygonaceae	
272	<i>Phacelia dubia</i>	Small flower scorpion weed	Hydrophyllaceae	
273	<i>Phacelia maculata</i>	Spotted scorpion weed	Hydrophyllaceae	
274	<i>Phegopteris hexagonoptera</i>	Broad beech fern	Thelypteridaceae	
275	<i>Philadelphus hirsutus</i>	Hairy mock orange	Hydrangeaceae	County record
276	<i>Photinia serratifolia</i>	Taiwanese redbtip	Rosaceae	Not native
277	<i>Phyllanthus caroliniensis</i>	Carolina leaf flower	Phyllanthaceae	
278	<i>Physalis heterophylla</i>	Clammy ground cherry	Solanaceae	
279	<i>Phytolacca americana</i>	American pokeweed	Phytolaccaceae	
280	<i>Pinus palustris</i>	Longleaf pine	Pinaceae	
281	<i>Pinus taeda</i>	Loblolly pine	Pinaceae	
282	<i>Pinus virginiana</i>	Virginia pine	Pinaceae	
283	<i>Piptochaetium avenaceum</i>	Eastern needlegrass	Poaceae	
284	<i>Pityopsis aspera</i>	Carolina silkgrass	Asteraceae	
285	<i>Plantago aristata</i>	Large bract plantain	Plantaginaceae	
286	<i>Plantago heterophylla</i>	Slender plantain	Plantaginaceae	County record
287	<i>Plantago virginica</i>	Virginia plantain	Plantaginaceae	
288	<i>Platanthera clavellata</i>	Small green wood orchid	Orchidaceae	
289	<i>Platanthera cristata</i>	Crested fringed orchid	Orchidaceae	
290	<i>Pleopeltis michauxiana</i>	Resurrection fern	Polypodiaceae	
291	<i>Poa autumnalis</i>	Autumn bluegrass	Poaceae	County record
292	<i>Polygala ambigua</i>	Loose milkwort	Polygalaceae	County record
293	<i>Polygala incarnata</i>	Procession flower	Polygalaceae	County record
294	<i>Polygonatum biflorum</i>	Solomon's seal	Ruscaceae	
295	<i>Polypremum procumbens</i>	Rustweed	Tetrachondraceae	
296	<i>Polystichum acrostichoides</i>	Christmas fern	Dryopteridaceae	
297	<i>Pontederia cordata</i>	Pickerel weed	Pontederiaceae	
298	<i>Potentilla indica</i>	Mock strawberry	Rosaceae	Not native, invasive

	<i>Taxon name</i>	<b>Common name</b>	<b>Family</b>	<b>Comments</b>
299	<i>Potentilla simplex</i>	Common cinquefoil	Rosaceae	
300	<i>Prunella vulgaris</i> var. <i>lanceolata</i>	American self heal	Lamiaceae	
301	<i>Prunus serotina</i>	Black cherry	Rosaceae	
302	<i>Pseudognaphalium obtusifolium</i>	Eastern rabbit tobacco	Asteraceae	
303	<i>Ptilimnium capillaceum</i>	Herb William	Apiaceae	
304	<i>Pycnanthemum incanum</i>	Southern hoary mountain mint	Lamiaceae	
305	<i>Pycnanthemum loomisii</i>	Loomis' mountain mint	Lamiaceae	
306	<i>Pyrus calleryana</i>	Bradford pear	Rosaceae	Not native, invasive
307	<i>Quercus alba</i>	Northern white oak	Fagaceae	
308	<i>Quercus falcata</i>	Southern red oak	Fagaceae	
309	<i>Quercus marilandica</i>	Black Jack oak	Fagaceae	
310	<i>Quercus nigra</i>	Water oak	Fagaceae	
311	<i>Quercus nigra X stellata</i>	Hybrid oak	Fagaceae	This oak needs more study
312	<i>Quercus rubra</i>	Northern red oak	Fagaceae	
313	<i>Quercus stellata</i>	Post oak	Fagaceae	
314	<i>Ranunculus hispidus</i>	Bristly buttercup	Ranunculaceae	County record
315	<i>Ranunculus pusillus</i>	Low buttercup	Ranunculaceae	
316	<i>Ranunculus recurvatus</i>	Hooked crowfoot	Ranunculaceae	
317	<i>Rhexia mariana</i>	Pale meadow beauty	Melastomataceae	
318	<i>Rhexia virginica</i>	Handsome Harry	Melastomataceae	
319	<i>Rhododendron viscosum</i>	Swamp azalea	Ericaceae	
320	<i>Rhynchosia tomentosa</i>	Twining snout bean	Fabaceae	
321	<i>Rosa lucieae</i>	Dorothy Perkins rose	Rosaceae	Not native
322	<i>Rosa multiflora</i>	Multiflora rose	Rosaceae	Not native, invasive, County record
323	<i>Rubus cuneifolius</i>	Sand blackberry	Rosaceae	County record
324	<i>Rubus flagellaris</i>	Whiplash dewberry	Rosaceae	
325	<i>Rubus pensilvanicus</i>	Southern Blackberry	Rosaceae	
326	<i>Rubus trivialis</i>	Southern dewberry	Rosaceae	County record
327	<i>Ruellia caroliniensis</i>	Hairy wild petunia	Acanthaceae	



	<i>Taxon name</i>	<b>Common name</b>	<b>Family</b>	<b>Comments</b>
328	<i>Rumex acetosella</i>	Sheep sorrel	Polygonaceae	Not native, invasive
329	<i>Salvia lyrata</i>	Lyre leaf sage	Lamiaceae	
330	<i>Salvia urticifolia</i>	Nettle leaf sage	Lamiaceae	
331	<i>Sambucus canadensis</i>	Common elderberry	Adoxaceae	
332	<i>Sanicula canadensis</i>	Canadian black snakeroot	Apiaceae	
333	<i>Sanicula smallii</i>	Small's black snakeroot	Apiaceae	
334	<i>Sassafras albidum</i>	Sassafras	Lauraceae	
335	<i>Schizachyrium scoparium</i>	Little bluestem	Poaceae	
336	<i>Scirpus cyperinus</i>	Wool grass	Cyperaceae	
337	<i>Scleria oligantha</i>	Little head nutrush	Cyperaceae	
338	<i>Scutellaria elliptica</i>	Hairy skullcap	Lamiaceae	
339	<i>Scutellaria integrifolia</i>	Helmet skullcap	Lamiaceae	
340	<i>Scutellaria ovata</i>	Heartleaf skullcap	Lamiaceae	
341	<i>Silene stellata</i>	Starry campion	Caryophyllaceae	
342	<i>Silphium compositum</i>	Composite leaf rosinweed	Asteraceae	
343	<i>Sisyrinchium angustifolium</i>	Narrowleaf blue eyed grass	Iridaceae	
344	<i>Sisyrinchium rosulatum</i>	Fairy stars	Iridaceae	Not native, County record
345	<i>Smilax bona-nox</i>	Saw greenbrier	Smilacaceae	
346	<i>Smilax glauca</i>	White leaf catbrier	Smilacaceae	
347	<i>Smilax laurifolia</i>	BlaspHEME vine	Smilacaceae	
348	<i>Smilax rotundifolia</i>	Common greenbriar	Smilacaceae	
349	<i>Solanum carolinense</i>	Carolina horse nettle	Solanaceae	
350	<i>Solanum nigrum</i>	European black nightshade	Solanaceae	Not native, County record
351	<i>Solidago altissima</i>	Tall goldenrod	Asteraceae	
352	<i>Solidago arguta</i>	Sharpleaf goldenrod	Asteraceae	
353	<i>Solidago caesia</i>	Wreath goldenrod	Asteraceae	
354	<i>Solidago erecta</i>	Slender goldenrod	Asteraceae	
355	<i>Solidago nemoralis</i>	Eastern gray goldenrod	Asteraceae	
356	<i>Solidago odora</i>	Sweet goldenrod	Asteraceae	
357	<i>Solidago patula</i>	Swamp goldenrod	Asteraceae	County record
358	<i>Solidago rugosa var. aspera</i>	Wrinkle-leaf goldenrod	Asteraceae	

	<i>Taxon name</i>	<b>Common name</b>	<b>Family</b>	<b>Comments</b>
359	<i>Sorghastrum nutans</i>	Yellow indian grass	Poaceae	
360	<i>Spiranthes lacera</i> var. <i>gracilis</i>	Southern slender ladies' tresses	Orchidaceae	
361	<i>Steinchisma hians</i>	Gaping panic grass	Poaceae	
362	<i>Stellaria media</i>	Common chickweed	Caryophyllaceae	
363	<i>Stylosanthes biflora</i>	Sidebeak pencil flower	Fabaceae	
364	<i>Symphyotrichum dumosum</i>	White bushy aster	Asteraceae	
365	<i>Symphyotrichum lateriflorum</i>	Calico aster	Asteraceae	
366	<i>Symphyotrichum patens</i>	Late purple aster	Asteraceae	
367	<i>Symplocos tinctoria</i>	Horse sugar	Symplocaceae	
368	<i>Tephrosia spicata</i>	Spiked hoary pea	Fabaceae	
369	<i>Tipularia discolor</i>	Cranefly orchid	Orchidaceae	
370	<i>Toxicodendron radicans</i>	Eastern poison ivy	Anacardiaceae	
371	<i>Tradescantia ohiensis</i>	Ohio spiderwort	Commelinaceae	
372	<i>Tragia urticifolia</i>	Nettle-leaf noseburn	Euphorbiaceae	
373	<i>Trichostema dichotomum</i>	Common bluecurls	Lamiaceae	
374	<i>Trichostema setaceum</i>	Narrowleaf bluecurls	Lamiaceae	
375	<i>Tridens flavus</i>	Purpletop greasegrass	Poaceae	
376	<i>Trifolium campestre</i>	Low hop clover	Fabaceae	Not native
377	<i>Triodanis perfoliata</i>	Clasping leaf Venus's looking glass	Campanulaceae	
378	<i>Typha latifolia</i>	Cat tail	Typhaceae	
379	<i>Uvularia perfoliata</i>	Perfoliate bellwort	Colchicaceae	
380	<i>Vaccinium arboreum</i>	Sparkleberry	Ericaceae	
381	<i>Vaccinium elliotii</i>	Mayberry	Ericaceae	
382	<i>Vaccinium pallidum</i>	Early lowbush blueberry	Ericaceae	
383	<i>Vaccinium stamineum</i>	Deerberry	Ericaceae	
384	<i>Valerianella radiata</i>	Beaked cornsalad	Caprifoliaceae	
385	<i>Verbascum thapsus</i>	Woolly mullein	Scrophulariaceae	Not native, invasive
386	<i>Verbena brasiliensis</i>	Brazilian vervain	Verbenaceae	Not native
387	<i>Verbesina alternifolia</i>	Wingstem	Asteraceae	
388	<i>Vernonia gigantea</i>	Giant ironweed	Asteraceae	
389	<i>Veronica peregrina</i>	Common purslane speedwell	Plantaginaceae	Not native

	<b><i>Taxon name</i></b>	<b>Common name</b>	<b>Family</b>	<b>Comments</b>
390	<b><i>Viburnum rufidulum</i></b>	Rusty blackhaw	Adoxaceae	
391	<b><i>Vinca major</i></b>	Greater periwinkle	Apocynaceae	Not native, invasive
392	<b><i>Viola affinis</i></b>	Sand violet	Violaceae	
393	<b><i>Viola bicolor</i></b>	Field pansy	Violaceae	
394	<b><i>Viola hirsutula</i></b>	Southern woodland violet	Violaceae	County record
395	<b><i>Viola sororia</i></b>	Common blue violet	Violaceae	
396	<b><i>Vitis cinerea</i></b>	Downy grape	Vitaceae	County record
397	<b><i>Wisteria sinensis</i></b>	Chinese wisteria	Fabaceae	Not native, invasive
398	<b><i>Xanthorhiza simplicissima</i></b>	Yellowroot	Ranunculaceae	
399	<b><i>Xyris jupicai</i></b>	Richard's yellow eyed grass	Xyridaceae	
400	<b><i>Youngia thunbergiana</i></b>	Youngia	Asteraceae	County record
401	<b><i>Yucca flaccida</i></b>	Flaccid leaf yucca	Agavaceae	